

The Board of County Supervisors of Albemarle County, Virginia, in regular meeting on the 18<sup>th</sup> day of June, 2025, adopted the following resolution:

RESOLUTION

WHEREAS, the street(s) in **Old Trail Blocks 27 and 7C**, as described on the attached Additions Form AM-4.3 dated **June 18<sup>th</sup>, 2025**, fully incorporated herein by reference, is shown on plats recorded in the Clerk's Office of the Circuit Court of Albemarle County, Virginia; and

WHEREAS, the Resident Engineer for the Virginia Department of Transportation has advised the Board that the street(s) meet the requirements established by the Subdivision Street Requirements of the Virginia Department of Transportation.

NOW, THEREFORE, BE IT RESOLVED, that the Albemarle Board of County Supervisors requests the Virginia Department of Transportation to add the street(s) in **Old Trail Blocks 27 and 7C**, as described on the attached Additions Form AM-4.3 dated **June 18<sup>th</sup>, 2025**, to the secondary system of state highways, pursuant to §33.2-705, Code of Virginia, and the Department's Subdivision Street Requirements; and

BE IT FURTHER RESOLVED that the Board guarantees a clear and unrestricted right- of-way, as described, exclusive of any necessary easements for cuts, fills and drainage as described on the recorded plats; and

FURTHER RESOLVED that a certified copy of this resolution be forwarded to the Resident Engineer for the Virginia Department of Transportation.

\* \* \* \* \*

Recorded vote:

Moved by:

Seconded by:

Yeas:

Nays:

Absent:

A Copy Teste:

---

Claudette K. Borgersen, Clerk  
Board of County Supervisors



**COMMONWEALTH OF VIRGINIA DEPARTMENT OF TRANSPORTATION**  
**Form AM 4.3**

**In Albemarle County**

by Resolution of the governing body adopted 6/18/2025

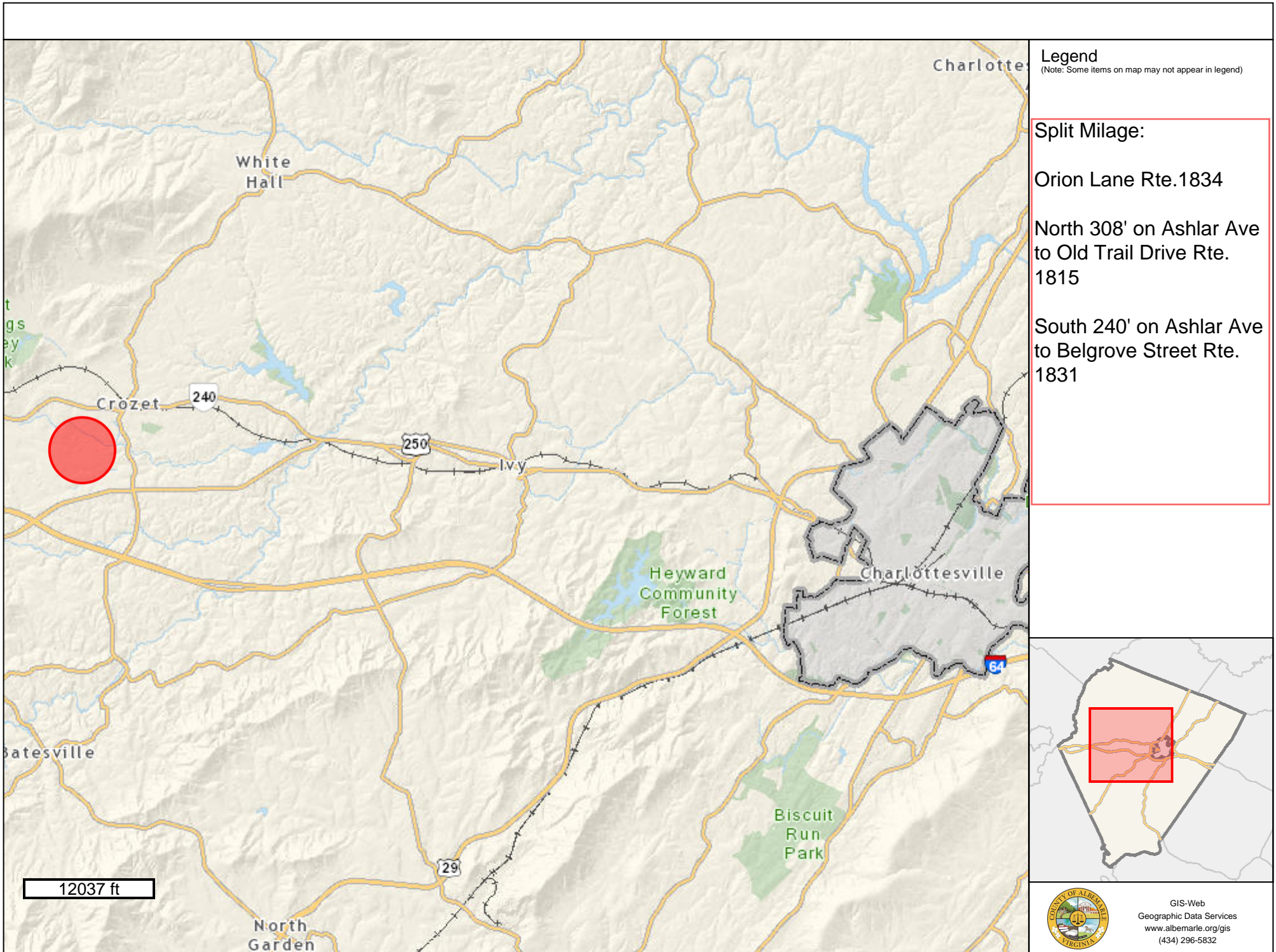
The following VDOT Form AM-4.3 is hereby attached and incorporated as part of the governing body's resolution for changes to the secondary system of state highways.

A Copy Testee Signed (County Official): \_\_\_\_\_

**Report of Changes in the Secondary System of State Highways**

Project/Subdivision: **Old Trail Blocks 27 and 7C**

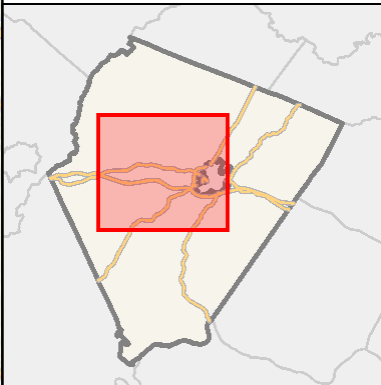
CHANGE TYPE	RTE NUM & STREET NAME	CHANGE DESCRIPTION	FROM TERMINI	TO TERMINI	LENGTH	NUMBER OF LANES	RECORDATION REFERENCE	ROW WIDTH
Addition	Rt. 1834 - Orion Lane	New subdivision street §33.2-705	ESM at Int of Fennel Road (Private Road)	East 708' to Int of Ashlar Avenue Rte. 1913	0.13	2	4704/389	61.00
Addition	Rt. 1835 - Golf View Drive	New subdivision street §33.2-705	ESM at int. with Belgrove Street Rte. 1831	North 322' to Int. with Orion Lane Rte. 1834	0.06	2	4704/389	61.00



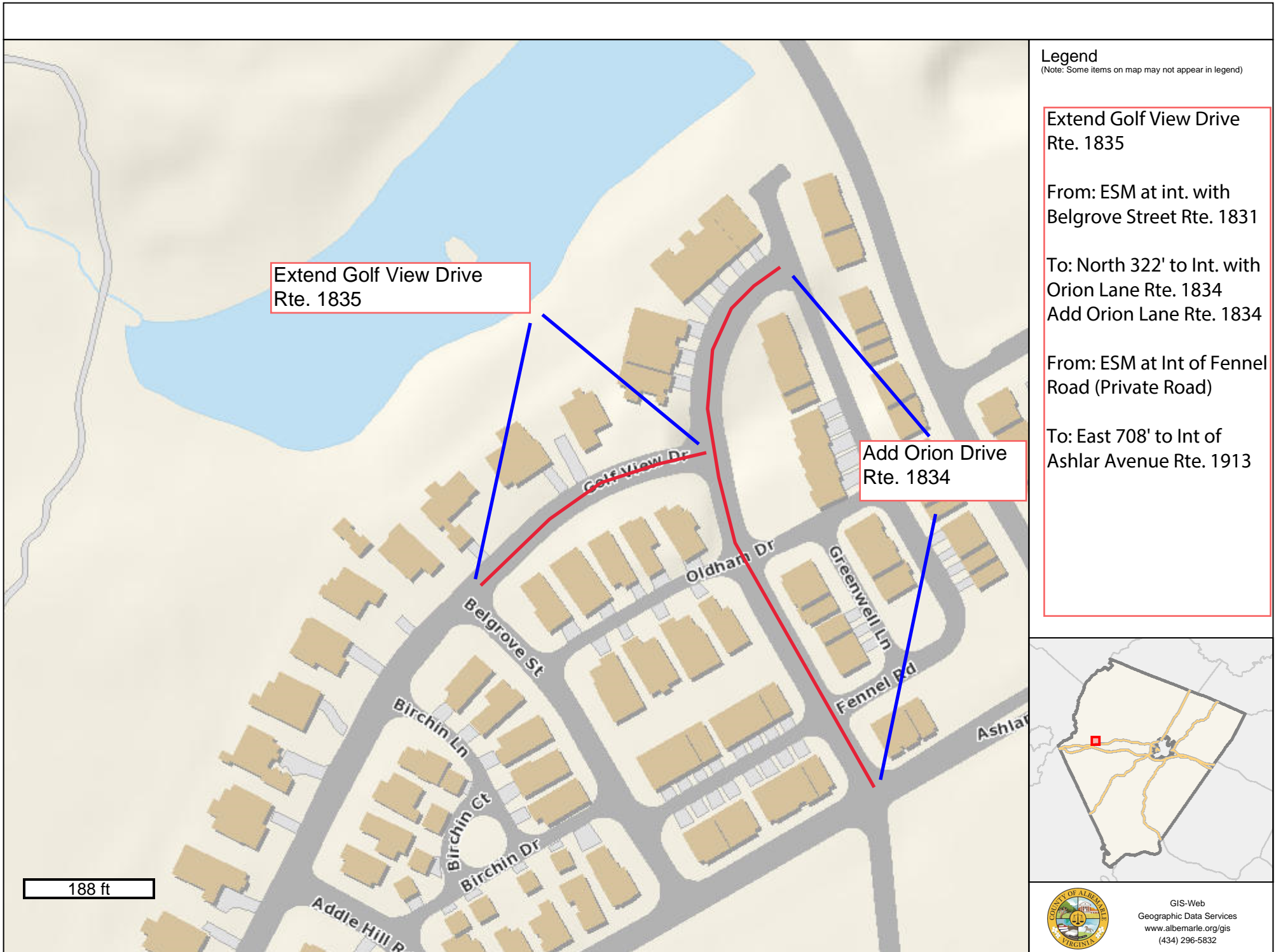
**Legend**  
 (Note: Some items on map may not appear in legend)

**Split Milage:**

- Orion Lane Rte.1834
- North 308' on Ashlar Ave to Old Trail Drive Rte. 1815
- South 240' on Ashlar Ave to Belgrove Street Rte. 1831




 GIS-Web  
 Geographic Data Services  
[www.albemarle.org/gis](http://www.albemarle.org/gis)  
 (434) 296-5832



Extend Golf View Drive  
Rte. 1835

Add Orion Drive  
Rte. 1834

**Legend**  
(Note: Some items on map may not appear in legend)

Extend Golf View Drive  
Rte. 1835

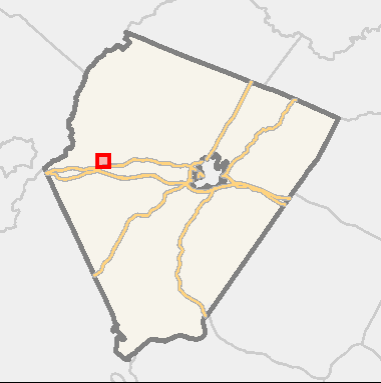
From: ESM at int. with  
Belgrove Street Rte. 1831

To: North 322' to Int. with  
Orion Lane Rte. 1834  
Add Orion Lane Rte. 1834

From: ESM at Int of Fennel  
Road (Private Road)

To: East 708' to Int of  
Ashlar Avenue Rte. 1913

188 ft



GIS-Web  
Geographic Data Services  
www.albemarle.org/gis  
(434) 296-5832